

TIER DROP NEWSLETTER



FEBRUARY / 2022

DECEMBER 2021 Residential Gallons Per Capita

Water Use: 72.61. Note: During this drought, "gallons per capita" will be the new "measure" for tracking our water conservation efforts. Soon, the State will determine how much water per person per day will be targeted.

OUR MISSION STATEMENT:
To provide, protect, and maintain Joshua Tree's water - our vital community resource.

HOLIDAY CLOSURE: The District Office will be closed for phone/email assistance on Monday, February 21st*, in honor of President's Day.

*In the event of a water emergency, call the District Office, 24/7--our crews are always on standby, working hard to save our water!

IN THIS ISSUE...

- **Upcoming Events and Meetings**
- **Drought Water Conservation Emergency Regulation Jan. 2022**
- **Volunteer Docent Winter Meeting rescheduled due to past weather**
- **Curious Minds Want to Know...**
- **In Case You Missed It: New Board Member Selected!**
- **More on: Careers in Water**
- **Desert Edible Gardening Class: FREE**
- **February's Farmers' Market**
- **Low Income Water Assistance Program Update**
- **C.I.R.P. Update**
- **Sneak Peak for 2022's Native Plant Sale Offerings**
- **February Gardening Tips and Plant of the Month**

Drought Water Conservation Emergency Regulation as of January 2022

The California State Water Board found that an emergency exists due to severe drought conditions and that adoption of emergency regulations was necessary.

It was determined that immediate action was needed to ensure all Californians are taking sufficient actions to conserve water and preserve the State's water supply. On January 4, 2022, the State Water Board adopted an emergency regulation by resolution. On January 18, 2022, the emergency regulation became effective. It will remain in effect for one year from the effective date, unless the State Water Board acts to end, modify, or readopt it.

Upcoming Events and Meetings

- **CAC** February 1, 6PM Tuesday (Virtual) See website for Agenda
- **Regular Board of Directors Meeting:** Wednesday, February 2nd and 16th at 5:30PM (Virtual) See website for Agenda
- **Volunteer / Docent Meeting** February 4, Friday 3PM-4PM outside

Emergency Regulation Requirements (Read more in the documents below)

- Turn off decorative water fountains
- Turn off/pause your irrigation system when it's raining and for two days after rain
- Use an automatic shutoff nozzle on your water hose
- Use a broom, not water, to clean sidewalks and driveways
- Give trees just what they need: avoid overwatering

at the District Office Gardens

Other calendar items: www.jbwd.com

RESCHEDULED DUE TO BAD WEATHER

VOLUNTEER DOCENT Winter Meeting Slated: February 4, Friday 3PM-4PM

New and returning volunteer Docents are invited to come together to revisit our seed propagation efforts and to discuss our March native plant sale (the proposed plant inventory) and free seed/plant swap event.

The "seed" bank will be made available for those needing more seeds--or wishing to begin to dabble in the art of Wildcrafting, and more training will be shared on ethnobotany (historic uses) of additional native plants. We will also share a few tips on "quick starting" seeds.

The meeting will be held at the District Office so your RSVP, with name, email and phone number is needed in advance should plans change.

Contact Kathleen at kjradnich@gmail.com

Emergency Regulation Documents

- [Frequently Asked Questions](#) (1/18/2022)
- [Press Release: State Water Board adopts emergency water use regulations to boost drought resilience](#) (1/4/2022)
- [Resolution with Adopted Text of Emergency Regulation](#) (adopted 1/4/2022)
- [Proclamation of a State of Emergency](#) (10/19/2021)



More on...

Careers in Water

Are you looking for a rewarding career with great pay and the chance to give back to your community? A career in water offers the opportunity to deliver, clean, and renew our world's most essential resource.

Water and resource recovery careers pay competitive, family sustaining wages at all levels of experience. **Take a look** at the salary ranges for just some of the many

different career paths the water industry embraces.

There are a variety of career paths which require different skill sets and training. From high school graduates, to PhDs, to veterans, no matter your background, there is opportunity for everyone to join the water workforce.

Some positions are directly water focussed, but many peripheral positions deal with the science behind water (environmental studies / conservation),

legislative and water laws (attorneys), finance (bookkeepers/accountants), human resources, risk management, public affairs, emergency management, administrative, customer service, fleet mechanics, record keeping, wastewater, warehousing and storekeeping...the list is endless!

Think about it...a career in water can take you just about *anywhere* in the country--even the world--because everyone needs water.

Next month we'll share some websites where you can monitor job openings in water careers. *Stay tuned...*

IN CASE YOU MISSED IT: NEW BOARD MEMBER APPOINTED!

January brought forth four impressive individuals expressing interest in joining our District's leadership team. Were qualifications the only criteria to be considered, the Board's decision would have been hard pressed to select just one candidate to fill the vacated seat by Director Reynolds. As was, several other determining factors had to be weighed out and prioritized in the selection process.

While this appointment holds only until the next election (November of 2022) the commitment of time and effort for the new Board Appointee is significant and truly demanding. With appreciation, we thank the three other candidates for their willingness to step-up onto the Board.

All said and done, we welcome Barbara Delph, who has served as JBWD's Chairperson to the Citizen's Advisory Council, as the newly appointed Board Member to the Joshua Basin Water District's leadership team!

CURIOUS MINDS WANT TO KNOW:



Often, at our Farmers' Market booth or on social media, we get good questions that others may be asking. Here's more of a sample:

Q: Where does the Water District get funds to assist customers who are low income and in need of financial assistance to pay their water bills?

A: By law, JBWD *may not* use any rate payer funds to help our low income customers with their water bills. However, we are able to use funds received by the County from penalty fees charged to property owners who are late on their property taxes.

A small portion of these penalty fees are forwarded from the county to JBWD, which are directly used to assist customers in need of help with their water bills.

****To learn more about our low income assistance program, see article in this newsletter below.***



LOW INCOME WATER ASSISTANCE PROGRAM

Sometimes, a little bit can make a huge difference. JBWD has teamed up with the United Way of the Desert to bring a boost of financial help for low income customers.

Applicants can apply annually for this assistance that qualifies those who only need help with a personal residential water meter account.

This program is totally administered by United Way of the Desert, so to apply, one needs to simply call them directly at: **(760) 323-2731**, or visit their website, which explains the entire program. It also allows you to apply on line. Check it out at: help2others.com.



United Way of the Desert



Note: This special water assistance program is administered directly by the United Way of the Desert's (UWD) staff. JBWD simply credits customer accounts when directed to do so by the UWD after proper screening of applicants for their program.



Desert Edible Gardening Class

February 9 & 10, 2022 @ 6-8 PM

Virtual/ZOOM (4 hours total /course)



Gardening in the desert is not for the faint of heart: extreme heat, extreme cold, extreme winds, extremely poor soil, extreme lack of rain, not to mention extremely hungry critters, all make for a meager family meal at the table.

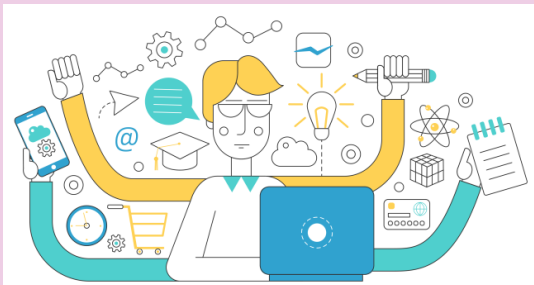
Don't despair! Join us for a free 4-hour, two-evening course on Desert Edible Gardening. Learn some tricks that may make a difference in your edible bounty and with your enjoyment for gardening.

COVERED TOPICS WILL INCLUDE:

- *Winning the war against desert environmental challenges: wind, temperatures, dryness, animals, etc.*
- *Best choices for your garden (heat resistant and disease resistant varieties (GMO) vs. organic)*
- *Pros and cons: container gardening, raised bed gardening, hoop houses and more*
- *Amending desert soil to encourage healthy produce*
- *Best solutions for infestations*
- *Water conservation efficiency for gardeners*

YOUR RSVP IS REQUIRED BY MONDAY, FEBRUARY 7, 2022-5PM:

Email Kathleen Radnich at kjradnich@gmail.com, or call: 760.218.2822. Your name and email will be required for a confirmation link to be sent to you directly to attend via Zoom. Instructed by Tony Walters, this program is presented in partnership with the Mojave Desert Resource Conservation District and Joshua Basin Water District .



FEBRUARY AT THE FARMERS' MARKET BOOTH

Visit our booth for a free 2022 Desert Gardening calendar!

"CAREERS IN WATER"

The waters run deep with this topic, but we'll try to give you some amazing insights on just how vast this career field is. Do you know students in highschool, college, or former active military that are looking for career stability? Have you just moved into the area and have skill sets that might fit into the water industry, but don't know where to start? Let's chat. Come find us at the

market every Saturday (our booth is on the west end) from 8AM-1PM in the heart of Joshua Tree.



Capital Improvement and Replacement Program: "C.I.R.P." UPDATE

You're water dollar\$ at work

"We are so close!"
Steve Corbin, Water Production Supervisor

Well 14, our largest producing well, has proven to be an epic journey towards cleaning, refurbishing and upgrading over the past five years. During that time frame, our staff has worked hard to "supplement" the water production utilizing our other wells until we could document totally safe drinking water coming from Well 14. That time has arrived! All details have been completed, with only a final state inspection pending to give us the green light to activate this well's water flow into the community waterline supply. This could happen any day now...*we're so close!*



SNEAK PEAK FOR OFFERINGS AT OUR UPCOMING MARCH 27, 2022 NATIVE PLANT SALE

Note: Many of these native specimens are available to view in our Water Wise Demonstration Garden--established and thriving. Schedule a personal tour today to learn more! Contact Kathleen Radnich @ kjradnich@gmail.com

- Desert rock pea
- Cheese bush
- Milkweed
- Four wing salt bush
- Cat's tongue
- Brickellia
- Bladderpod
- Desert Willow
- Acton encelia
- Buckwheat
- Galleta grass
- Desert Lavender
- Creosote
- Paperbag bush
- Catsclaw acacia
- Jojoba
- Desert needlegrass
- Mojave aster
- Mojave yucca

DESERT-SMART GARDENING TIPS FOR FEBRUARY

FEBRUARY Watering Schedule: 9:00 AM to 3:00 PM

Avoid running above ground landscape irrigation systems on windy days--you'll think your plants have received water, but most moisture may have gone away into the air.

This month in your Desert-Smart Landscape:

This is a good month to control winter weeds in your garden before they flower.

- Plant ground covers, bulbs, low water use plants and natives if you missed the fall planting season
- Plant bare-root trees and shrubs through early March

- Prune evergreens now, but not later in spring or summer
- Prune the rest of your summer-blooming, deciduous fruit and nut trees, roses and dormant shrubs
- Fertilize perennials and trees with slow-release plant food (most natives and drought-adapted plants don't need fertilizer)
- Water trees deeply to prepare for spring growth surge
- Turn off irrigation timers if it rains

Linear-leaved Goldenbush, Narrowleaf Goldenbush, Showy Goldenbush

Ericameria linearifolia

Plant Form: Evergreen shrub

Water Use: Very low

Mature Size: 2-3 ft. tall x 3-4 ft. wide

Exposure: Full sun

Bloom Time: Spring (March - May)

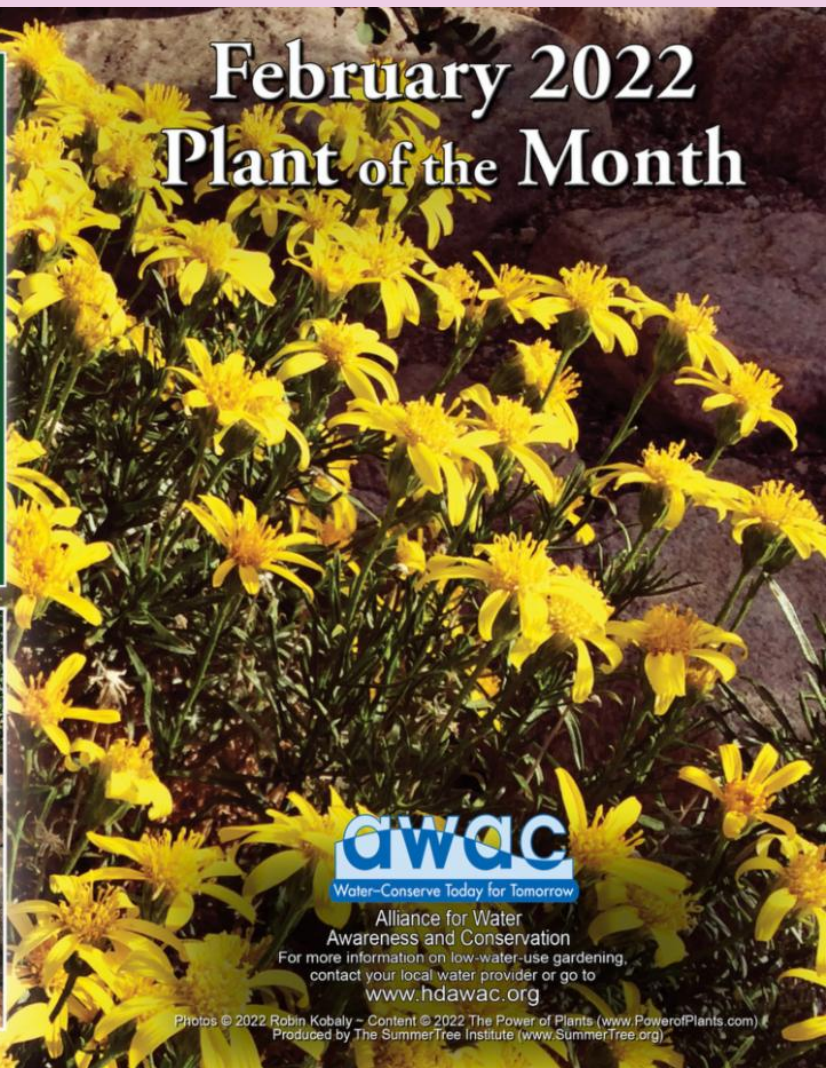
Native to: California, Arizona, Nevada, Utah

Hardiness: Cold Hardy to 10°F

Linear-leaved Goldenbush is a moderately fast-growing, erect shrub that is highly branched. One of its common names, Showy Goldenbush, was inspired by its prolific spring display of bright yellow, daisy-like flowers on long stems above dark green foliage. The aromatic, resinous, linear leaves of this California native deter browsing by rabbits and deer, while its radiant flowers attract butterflies and other pollinators. It is evergreen, but may drop some leaves during extended droughts. Valued today to achieve a natural look in landscaping, it was prized by Native Americans as a decoction to treat rheumatism. Works well as an accent, in a mixed border, or used in a mass planting for butterfly or bird gardens, as well as on slopes for erosion control.



February 2022 Plant of the Month



Water-Conserve Today for Tomorrow

Alliance for Water Awareness and Conservation

For more information on low-water-use gardening,

contact your local water provider or go to

www.hdawac.org

Photos © 2022 Robin Kobaly - Content © 2022 The Power of Plants (www.PowerofPlants.com) / Produced by The SummerTree Institute (www.SummerTree.org)

Joshua Basin Water District |
www.jbwd.com

