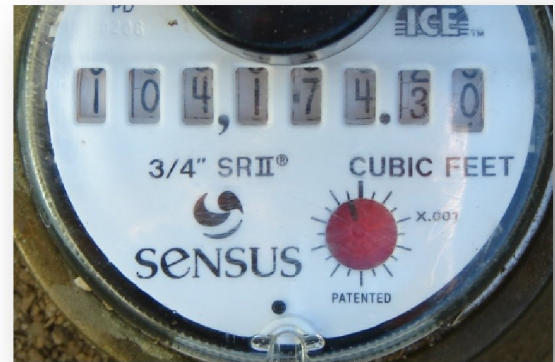


## Calculate Your Landscape Water Use

1. Check your water meter. Make sure that no water is being used, and that the red leak detector is not moving before you begin.
2. Record your current “before irrigation” meter reading.
3. Run an irrigation cycle or complete manual irrigation.
4. Record your “after irrigation” meter reading.
5. Subtract the “before irrigation” reading from the “after irrigation” reading.
6. Convert water use to gallons by multiplying cubic feet (cf) by 7.48.



## How to Reduce Your Landscape Water Use

1. Try skipping one irrigation cycle per week
2. Check your soil for moistness at a 4” depth at the end of the “no irrigation” day. If the soil can be formed into a clump, then skip another day and test again.
3. Established landscape plants should not need daily irrigation, even on the hottest days. See the Joshua Basin Irrigation Guide for help in scheduling irrigation.

## Sample Landscape Water Use Calculation

Description		Meter reading
A. Before irrigation	From meter	14812
B. After irrigation	From meter	14956
C. Water use, cubic feet	B – A	144
D. Water use, gallons	C x 7.48	1077

$$14956 - 14812 = 144\text{cf}$$

$$144\text{cf} \times 7.48 \text{ gals/cf} = 1077 \text{ gals per irrigation cycle}$$

Monthly water savings from skipping one irrigation cycle each week = 4308 gals

## Your Calculations

Description		Meter reading
A. Before irrigation	From meter	
B. After irrigation	From meter	
C. Water use, cubic feet	B – A	
D. Water use, gallons	C x 7.48	