

President
Tom Floen

VP
Stacy Doolittle

Directors
Jane Jarlsberg
Tomas Short
David Fick

**General
Manager**
Sarah Johnson

Legal Counsel
Jeff Hoskinson



SPECIAL MEETING AGENDA OF THE BOARD OF DIRECTORS

Wednesday, June 18, 2025, at 5:00 p.m.

MEETINGS ARE HELD IN PERSON AT 61750 CHOLLITA RD., JOSHUA TREE, CA 92252

REMOTE ACCESS IS AVAILABLE FOR THE CONVENIENCE OF THE PUBLIC

CLICK TO JOIN VIRTUALLY: [ZOOM LINK](#)

CALL TO JOIN BY PHONE: (669) 444-9171

MEETING ID: 872 8707 9239

PASSCODE: 61750

MISSION, VISION, AND VALUES

Mission Statement

To provide, protect, and maintain Joshua Tree's water - our vital community resource.

Vision Statement

To achieve excellence in all District endeavors.

Values

The community of Joshua Tree has entrusted the Board of Directors and employees of Joshua Basin Water District with its most valuable natural resource, its groundwater. As stewards of the community water supply, we oversee this critical natural resource to ensure current and future water reliability. Dedicated to this purpose, we embrace these important values:

- **Integrity** – To consistently earn our customers' trust by prioritizing the needs of the community... doing the right thing for the right reason.
- **Transparency** – To openly and honestly share information about our operations with the public.
- **Respect** – To treat the residents of Joshua Tree, and all those contacted in the course of business, with high esteem and regard.
- **Fiscal Responsibility** – To manage all resources as if they were our own, whether revenues, assets, or water supply, in a conscientious and appropriate manner.
- **Accountability** – To take responsibility for our decisions and actions in managing this essential resource.

1. CALL TO ORDER / PLEDGE OF ALLEGIANCE

2. DETERMINATION OF A QUORUM

Consideration of Board Member requests for remote participation.

3. APPROVAL OF AGENDA

4. DISCUSSION/ACTION CALENDAR

The Board will accept public comments on agenda items before discussion and potential action takes place. When providing a comment, please state your name and limit your remarks to three minutes.

A. AUTHORIZATION TO CONTRACT WITH LAYNE FOR REHABILITATION SERVICES AT WELL 15

PRESENTED BY: GENERAL MANAGER, SARAH JOHNSON

RECOMMENDED ACTION: AUTHORIZE THE GENERAL MANAGER TO ENTER INTO THREE CONTRACTS WITH LAYNE, A GRANITE COMPANY, FOR SERVICES RELATED TO THE REHABILITATION OF WELL 15:

1. FURNISHING AND INSTALLING REPLACEMENT PUMPING EQUIPMENT;
2. SUPPORTING BESST, INC. WITH PROFILING AND TEST PUMPING SERVICES; AND
3. MOTOR- FURNISHING AND INSTALLING NEW OR REPAIRED MOTOR

5. ADJOURNMENT

MEETING INFORMATION

The public is invited to comment on any item on the agenda during the discussion of that item.

Availability of agenda materials: Materials related to any item on this Agenda submitted to the District Board of Directors or Committee Members after distribution of the agenda packet are available for public inspection at the District's office, 61750 Chollita Road, Joshua Tree, CA 92252, during normal business hours. All documents supporting this agenda are available on the District website www.jbwd.com, subject to the staff's availability to post the documents before the meeting.

Reasonable Accommodation: Any person with a disability who requires accommodation to view the agenda or to participate in the public comment portion of the Board meeting, should direct such requests to Lisa Thompson, Executive Assistant, at 760-366-8438. Please allow three business days for your request to be processed. Requests must be received at least seventy-two (72) hours before the scheduled meeting.

Disruptive Conduct: If any meeting of the District is willfully disrupted by a person or by a group of persons so as to render the orderly conduct of the meeting impossible, a meeting may be recessed or the person or persons willfully disrupting the meeting may be ordered to leave the meeting. Disruptive conduct includes addressing the Board or Committee without first being recognized, not addressing the subject before the Board or Committee, repetitively addressing the same subject, failing to relinquish the podium when requested to do so, or otherwise preventing the Board or Committee from conducting its meeting in an orderly manner. Your cooperation is appreciated.

AGENDA ITEM NO:	4A
MEETING DATE:	06.18.25

Staff Report

PRESENTED BY:	SARAH JOHNSON, GENERAL MANAGER, RAY KOLISZ, INTERIM DIRECTOR OF OPERATIONS
TOPIC:	AUTHORIZATION TO CONTRACT WITH LAYNE FOR REHABILITATION SERVICES AT WELL 15
RECOMMENDATION:	<p>AUTHORIZE THE GENERAL MANAGER TO ENTER INTO THREE CONTRACTS WITH LAYNE, A GRANITE COMPANY, FOR SERVICES RELATED TO THE REHABILITATION OF WELL 15:</p> <ol style="list-style-type: none"> 1. FURNISHING AND INSTALLING REPLACEMENT PUMPING EQUIPMENT; 2. SUPPORTING BESST, INC. WITH PROFILING AND TEST PUMPING SERVICES; AND 3. MOTOR- FURNISHING AND INSTALLING NEW OR REPAIRED MOTOR

BACKGROUND:

Production Well 15 was drilled and constructed in March of 2002 with a completed drill depth of 750 feet below ground surface. At that time, the well was outfitted with a 300-horsepower electric motor, 440 feet of column pipe, tube shaft, line shafts and a 13 stage bowl assembly. Well 15 is a key production well for the District, producing approximately 950 gallons per minute. Earlier this year, staff noticed an abnormal vibration in the well that was investigated and determined to be worn line shaft bearings. Due to this determination, the pumping equipment requires rehabilitation. The pumping equipment was removed and inspected for wear and damage. It was determined that all pumping equipment needs replacement due to wear and corrosion.

Additionally, recent U.S.G.S. data suggests Chromium 6 levels may be lower in the deeper formations in the well. To determine water quality at varying depths, profiling must be conducted. If better quality of water is found below the maximum contaminant level (MCL), it could eliminate the need for treatment at this site, resulting in significant cost savings to the District.

Three distinct but related scopes of work are proposed to support this effort:

PROJECT 1: PUMPING EQUIPMENT REPLACEMENT

Layne proposes to furnish and install new pumping equipment assuming the existing design parameters remain valid after profiling. Work includes:

- New 12-stage Goulds bowl assembly and 10" column pipe
- Refurbishment of discharge head and replacement of suction strainer
- Start-up testing and documentation
- Estimated Total Cost: \$102,705.16

This work ensures operational reliability and restores pumping efficiency. Should profiling results necessitate design changes, Layne will adjust recommendations accordingly.

PROJECT 2: WELL PROFILING AND TEST PUMPING SUPPORT

To characterize contaminant distribution and aquifer flow conditions, BESST will conduct a dye tracer flow profiling survey supported by Layne technicians. Key elements include:

- Flow and chemistry data collection at up to 20 injection depths
- Depth-dependent groundwater sampling and lab analysis coordination
- A final engineering report recommending well modifications if needed
- Layne will also facilitate pump access, test pumping logistics, and site management.
- Estimated Total Cost: \$51,559.28 (includes Layne's 15% markup on BESST services)

PROJECT 3: MOTOR REPLACEMENT

Please note that the equipment costs outlined in Project 1 do include the cost of a motor replacement. At this stage, a thorough assessment is still required to evaluate the condition of the existing motor and determine whether it is more cost-effective to rehabilitate the current unit or to replace it with a new one. This evaluation will consider factors such as the motor's age, performance history, efficiency, and anticipated lifespan following rehabilitation. Once this assessment is complete, Layne will make a recommendation, and a revised cost will be incorporated into the overall project budget accordingly. Approval of this project is inclusive of motor costs not to exceed \$50,000.

EXCEPTION TO COMPETITIVE BIDDING

Due to the specialized nature of the work required for the rehabilitation of Well 15, following standard competitive bidding procedures is not practical or in the District's best interest. The scope involves proprietary profiling technology from BESST, Inc., which necessitates direct coordination and support from Layne. Layne is uniquely qualified to support this work, with the necessary expertise, compatible equipment, and a proven track record with the District. Engaging Layne ensures continuity, minimizes the risk of delays or technical issues between multiple vendors, and supports a streamlined, integrated approach to both the diagnostic and rehabilitation phases.

In accordance with the District's bidding policy, this procurement qualifies for an exemption based on multiple criteria—though only one is required to justify the exemption. Specifically, three factors apply: (1) public exigency, (2) the General Manager's determination, supported by reasonable evidence, that competitive bidding is unnecessary, as the need for immediate implementation in the best interest of the District, (3) the Board may formally grant an exemption of the bidding process should it be in the best interest of the district. The exemption is justified due to the critical

operational nature of the project and Layne's unique qualifications to perform the work effectively and without delay.

JUSTIFICATION

Contracting with Layne for both equipment and support services ensures continuity, technical compatibility, and efficient coordination during a critical well rehabilitation effort. The BESST profiling will inform any necessary design adjustments before installation.

FISCAL IMPACT:

Combined costs for projects 1 & 2 are: \$154,264.44, and project 3 is not to exceed: \$50,000. All projects to be funded from the District's approved and adopted budget. Pricing is based on prevailing wage rates and is valid for 30 days.



Project Proposal

Joshua Basin Water District

Well 15 Budgetary Pumping Equipment 2025

Steve Taylor

LAYNE, A GRANITE COMPANY
1717 West Park Avenue, Redlands, CA, 92373
E-mail: steve.taylor@gcinc.com

Ph: 909-390-2833
Fax: 909-390-5540
www.layne.com



Layne, A Granite Company
1717 W. Park Ave.
Redlands, CA. 92373
909-390-2833

5/22/2025

Joshua Basin Water District
Ray Kolisz
61750 Cholita Rd.
Joshua Tree, CA 92252

Re: Well 15 project, located at 5558 La Ferney Ave

Ray Kolisz,

Thank you for the opportunity to present this pricing for Well 15 Replacement Pumping Equipment - Budgetary. The following is a brief outline of the project scope:

This budgetary estimate is to furnish and install, and start up, all replacement pumping equipment for Well 15. This estimate assumes the same pump design is to be utilized following rehabilitation and BESST profiling. Should the design change, Layne will propose appropriate equipment at that time.

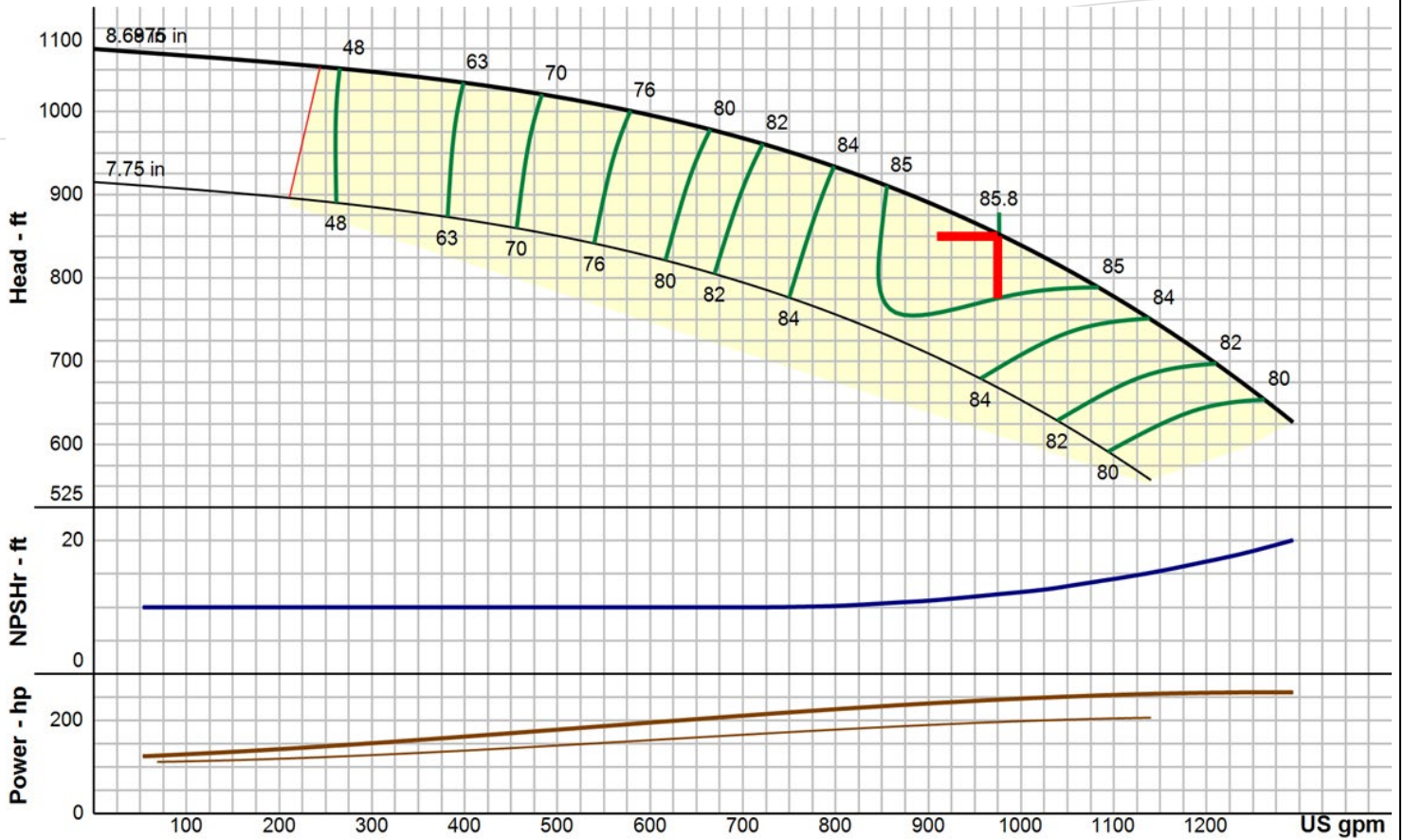
The attached estimate is valid for 30 days and is subject to Layne Terms and Conditions.

We appreciate your consideration of Layne as your trusted partner for water resource solutions.

Sincerely,

A handwritten signature in blue ink, appearing to read "Steve Taylor".

Steve Taylor
Account Manager
760-681-7526



Curve & hydraulic data presented is nominal performance based on ANSI/HI 14.6 acceptance grade 1B.

Design values are guaranteed within the following tolerances: Flow \pm 5%, Head \pm 3%, and optionally either Power + 4% or Efficiency - 3% at manufacturer's discretion.

Specified Flow	975.00 USgpm	Shut Off TDH (Disch Flange)	254.1 ft	Allow Service Factor	No
Specified TDH	850.00 ft	Shut Off Pressure (Bowl)	465.4 psi	kWh per 1000 gal	0.00000
Rated Speed	1770 RPM	Shut Off Pressure (Disch Flange)	110.0 psi	NPSHr at Design	12.0 ft
Atmospheric Pressure	14.70 psi	Run Out Flow	1293.0 USgpm	NPSH Margin at Design	62.5 ft
Pumping Level	820.00 ft	Run Out TDH (Bowl)	627.0 ft	Min Submergence at Design	25.64 in
NPSHa at Grade	34.0 ft	Run Out TDH (Disch Flange)	-206.3 ft	Actual Submergence	506.51 in
NPSHa at 1st Impeller	74.5 ft	Run Out Pressure (Bowl)	271.4 psi	Thrust K-Factor	7.5 lbpft
Fluid	Water	Run Out Pressure (Disch Flange)	-89.3 psi	Thrust at Design	15178.8 lb
Fluid Temperature	68.0 °F	Bowl Efficiency at Design	85.80 %	Thrust at Shut Off	16841.8 lb
Specific Gravity	1.0000	Best Efficiency	85.80 %	Thrust at Run Out	13483.8 lb
Viscosity	1.0017 cP	BEP Flow	976.0 USgpm	Bowl Material	Ductile Iron with Glass Enamel
Vapor Pressure	0.3393 psi	Design Flow % BEP	99.90 %	Bowl Material Derate Factor	1.00
Density	62 lbs/ft ³	Pump Efficiency	80.54 %	Impeller Material	316SS
Design Flow	975.0 USgpm	Friction Loss at Design	7.29 ft	Impeller Matl Derate Factor	1.00
Min Flow (MCSF)	244.0 USgpm	Power at Design	245.0 Hp	Total Flow Derate Factor	1.00
Design TDH (Bowl)	853.0 ft	NOL Power	261.0 Hp	Total Head Derate Factor	1.00
Design TDH (Disch Flange)	24.8 ft	Max Power (NOL) Flow	1267.0 USgpm	Total Efficiency Derate Factor	1.00
Design Pressure (Bowl)	369.3 psi	Recommended Power	300.0 Hp		
Design Pressure (Disch Flange)	10.8 psi	Driver Size Criteria	NOL Power Across Design Curve		
Shut Off TDH (Bowl)	1075.0 ft				

DO NOT USE FOR CONSTRUCTION UNLESS CERTIFIED

Certified By	
Project	975@850
Tag	
PO Number	
Serial Number	

PERFORMANCE ON DESIGN CURVE AT 1770 RPM

	Shut Off	Design [2]	Run Out [5]		
Flow (USGPM)	0.0	975.0	1293.0	Best Efficiency	85.80 % at 976.0 USgpm
TDH-Bowl (ft)	1075.0	853.0	627.0	Design Flow % BEP	99.90 %
TDH-Disch Flange (ft)	254.1	24.8	-206.3	Pump Efficiency	80.54 %
Bowl Efficiency (%)	-	85.80	78.60	Overall Efficiency	0.00 %
Power (Hp)	119.0	245.0	260.0	NOL Power	261.0 Hp at 1267.0 USgpm
NPSHr (ft) [1]	-	12.0	20.1	Specified NPSH Ratio	1.1
NPSH Margin (ft) [1]	-	62.5	54.4	Thrust Load Power Loss	2.01499 Hp
Hydraulic Thrust(lb)	8061.0	6398.0	4703.0	Total Flow Derate Factor	1.00
Thrust (lb)	16841.8	15178.8	13483.8	Total Head Derate Factor	1.00
Pressure-Bowl (psi)	465.4	369.3	271.4	Total Efficiency Derate Factor	1.00
Pressure-Disch Flange (psi)	110.0	10.8	-89.3	Actual Submergence	506.51 in
Min Submergence (Inch) [3]	-	25.64	30.17	Shaft Friction Power Loss	15.63 Hp
Friction Loss (ft) [4]	-	7.29	12.45	Min Flow (MCSF)	244.0 USgpm
Lineshaft Elongation (Inch)	0.92960	0.73782	-	kWh per 1000 gal	0.00000
Column Elongation (Inch)	0.58792	0.46650	-	Impeller Running Clearance	0.13 in
Lateral (Inch)	0.47168	0.40131	-		

[1] at 1st impeller eye [2] rated values [3] from pump suction inlet [4] from bowl to disch flange [5] per published data

OPERATING CONDITIONS

Specified Flow	975.00 USgpm
Specified TDH	850.00 ft
Rated Speed	1770 RPM
Atmospheric Pressure	14.70 psi
TPL	862.42 ft
Pumping Level	820.00 ft
NPSHa at 1st Impeller	74.5 ft
NPSHa at Grade	34.0 ft
Well Diameter	Over 20 in [508 mm] Casing
Operational Design	Constant Speed

FLUID CHARACTERISTICS

Fluid	Water
Fluid Temperature	68.0 °F
Specific Gravity	1.0000
Viscosity	1.0017 cP
Vapor Pressure	0.3393 psi
Density	62 lbs/ft ³

MATERIALS & DIMENSIONS

Bowl Data

Bowl Material	Ductile Iron with Glass Enamel
Impeller Material	316SS
Bowlshaft Material	416SS
Impeller Attachment	Taper Lock
Taperlock Material	316SS
Discharge Bowl Material	Ductile Iron
Suction Type	Bowl
Suction Material	Ductile Iron
Bowl Bolting Material	316SS
Sand Collar	304SS
Pipe Plug	Iron
Suction Bearing	Bronze
Discharge Bowl Bearing	Bronze

Bowl Data

Intermediate Bowl Bearing	Bronze
Tube Adapter Bearing Material	Bronze
Impeller Trim	8.69 in
Bowl Pressure Limit	830 psi
Model Max Sphere Size	0.94 in
Available Lateral	0.85 in
Bowl Shaft Diameter	1 11/16 in [42.9 mm]
Impeller Balance	Manufacturer's Standard
Impeller Design	Enclosed
Bowl Shaft Power Limit	371.81 Hp
Bowl Assembly Provided By	Xylem

Bowl Specials

Column Data

Column Type	Threaded
-------------	----------

Column Data

Column Diameter	10 in [254 mm]
-----------------	----------------

DO NOT USE FOR CONSTRUCTION UNLESS CERTIFIED

Certified By	
Project	975@850
Tag	
PO Number	
Serial Number	

Column Data

Lineshaft Diameter	1 15/16 in [49.2 mm]
Column Pipe Material	Carbon Steel
Lineshaft Material	Carbon Steel
Lineshaft Bearing Material	Bronze
Lineshaft Coupling Type	Threaded
Lineshaft Coupling Material	Carbon Steel
Column Loss	7.08 ft
Column Velocity	4.32 ft/s
Enclosing Tube Material	Carbon Steel
Enclosing Tube Size	2 1/2 in [63.5 mm]
Tube Retainer Material	Rubber
Bearing Retainer Design	Separate
Maximum Bearing Spacing	5 ft [1.5 m] Spacing
Max Column Section Length	120 in

Column Data

Number of Bearings	170
First Lateral Critical Speed	2862 RPM
First Lateral Critical Speed Ratio	1.62
Second Lateral Critical Speed	10505 RPM
Second Lateral Critical Speed Ratio	5.93
Column Wall Thickness	0.37 in
Lubrication Method	(Enclosed LS) Oil Lube
Lineshaft Power Limit	430 Hp
Column Assembly Provided By	Xylem

Column Specials

Head Data

Head Type	DI (Ductile Iron)
Discharge Flange Rating	150 #
Disch Flange Pressure Limit	250 psi
Head Design	One Piece Head
Discharge Head Material	Ductile Iron
Headshaft Material	Carbon Steel
Headshaft Coupling Type	Threaded
Headshaft Coupling Material	Carbon Steel
Headshaft Diameter	1.69 in
Discharge Head Size	10 in [254 mm]
Discharge Head BD	20 in [508 mm]

Head Data

Sealing Method	Tension Plate
Tension Plate	Cast Iron
Stuffing Box / Seal Hsg Bolt	316SS
Stuffing Box / Seal Hsg Brg	Bronze
Seal Housing Material	Cast Iron
Head Loss	0.21 ft
Head Bolting	Carbon Steel
Head Assembly Provided By	Xylem

Head Specials

Motor Data

Driver Type	Vertical Hollow Shaft Motor
Phase / Frequency	
Motor Frame	
Inverter Duty	
Steady Bushing	

Motor Data

Mfg Catalog Number	
Motor Part Number	
Motor Provided By	Xylem
Motor Mounted By	Customer

Motor Specials

Coating Data

Bowl OD	Goulds Water Technology Blue Enamel
Column OD	Goulds Water Technology Blue Enamel

Coating Data

Head OD	Goulds Water Technology Blue Enamel
---------	-------------------------------------

Testing Data

Accessories

Engineering Services

Engineering Services Notes

Miscellaneous Specials

DO NOT USE FOR CONSTRUCTION UNLESS CERTIFIED

Certified By	
Project	975@850
Tag	
PO Number	
Serial Number	

Assembly and Crating

Assembly	Column Loose
Crating	Domestic Skid

Assembly and Crating Notes

In general, pumps are crated and shipped fully assembled* via standard freight methods (LTL/LCL) if overall crated length is 20 ft or less and weight is 2500 lbs or less. Up to 45 ft and 4000 lbs can still be fully assembled but will ship via dedicated freight methods (FTL/FCL/flatbed/air/special). Otherwise, each sub-assembly (bowl, column, and head) is crated separately ("column loose"). *Motors, suction cans, mechanical seals, spare parts, and other special items are crated separately. Coordinate specific expectations with the factory at time of order.

Weight Data

Total Bowl Weight	1627 lbs
Total Column Weight	46750 lbs
Head Weight	350 lbs

Weight Data

Motor Weight	**Refer to Factory**
Total Weight	**Refer to Factory**

Comments

INFO, WARNING & ERROR MESSAGES

Mechanical Seal	Incomplete	Mechanical Seal is a required field
Column OD	Invalid	Standard enamel paint is typically not applied to the column if the pump is too long to ship fully assembled. Please select No Coating, a protective epoxy coating option, or contact the factory for special circumstances.
	Invalid	is invalid

Our offer does not include specific review and incorporation of any Statutory or Regulatory Requirements, and the offer is limited to the requirements of the design specifications. Should any Statutory or Regulatory requirements need to be reviewed and incorporated, then the Customer is responsible to identify those and provide copies for review and revision of our offer.

For Xylem issued engineering submittal documents not reviewed, and approved, within 30 days from the date of issuance, Xylem reserves the right to revise and update the pricing of the project accordingly. Delays in approval may result in adjustments to the originally quoted prices, to account for any changes in material costs, labor rates, or other relevant factors that may affect the overall quoted price.

Our quotation is offered in accordance with our comments and exceptions identified in our proposal and governed by our standard terms and conditions of sale – Xylem Americas. Available here: <https://www.xylem.com/en-us/support/xylem-americas-standard-terms-and-conditions/>

The prices set forth in this Agreement/Quote are based on the tariff rates, duties, government charges, and trade regulations in effect as of the Effective Date of this Quote. If, after the Effective Date, any new tariffs, duties, taxes, or similar charges are imposed, or any existing tariffs, duties, or charges are increased or modified by any government or regulatory authority (collectively, "Tariff Changes"), and such Tariff Changes result in an increase in the cost of goods, Xylem reserves the right to adjust the pricing of the affected goods to reflect the increased costs. Xylem is not obligated to deliver the goods and/or services until an agreement on the new price has been reached.

For units requiring a factory performance test, all performance tests will be conducted per ANSI/HI 14.6 standards unless otherwise noted. As a standard, test results for the primary design point meeting grade 2B tolerances for pumps with a rated shaft power of 134 hp or less and grade 1B for greater than 134 hp will be considered passing. If secondary or tertiary design points are required to be tested, these will be subject to grade 3B tolerances. For testing of more than 3 points, consult the factory. Other acceptance grades are available and must be clearly noted and mutually agreed upon between the Customer and Xylem before release to manufacture.

Holding shipment for testing approval allows 2 weeks of calculated production lead time for the approval process. If shipment approval has not been obtained by 4 weeks after submission of passing test results, Xylem reserves the right to ship product on purchase orders less than or equal to \$10,000 USD without explicit approval, or to impose storage fees until shipment approval is granted on purchase orders greater than \$10,000 USD. For planned approval processes exceeding 2 weeks, please consider that additional lead time and coordinate expectations with the factory, including storage fees. For faster shipment, select "No" to the hold shipment for testing approval option.

For units not requiring a factory performance test, product performance can be expected to meet 3B tolerances primarily due to the variability of field conditions. Field-measured performance may vary from factory-measured performance or published data as a result of unknown or unpredictable system conditions and measurement variability. If field performance testing is required after installation, factory performance testing before shipment is strongly recommended. Field performance test results do not constitute a warranty claim unless verified by Xylem.

The information provided in this submittal is published data nominally representative of the selected pump model's performance characteristics. If factory performance testing is included, actual as-tested performance curves for each tested pump will be provided after testing is complete. Impeller trim diameter is subject to change to meet intended design conditions.

DO NOT USE FOR CONSTRUCTION UNLESS CERTIFIED

Certified By	
Project	975@850
Tag	
PO Number	
Serial Number	

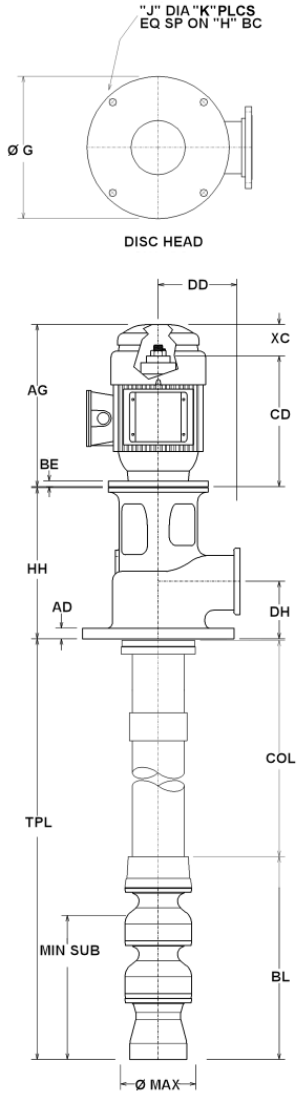
Special requests are subject to further review after receipt of customer purchase order during the factory's order entry and design engineering processes. If NSF 61 certified construction is required, an additional audit will be completed. The Xylem team will communicate any discrepancies and possible changes. Xylem certifies that the materials specified with a NSF 61 certified construction are in compliance with NSF/ANSI/CAN 61 Drinking Water System Components - Health Effects. In compliance with NSF, Xylem vertical turbine pumps are assembled in NSF certified facilities in our Vertical Turbine Global Center of Excellence in Lubbock, TX, or our Vertical Column Pump factory in Pewaukee, WI. For more information, see our official listing here: <https://info.nsf.org/Certified/PwsComponents/Listings.asp?Company=1D860&Standard=061>

Customer is responsible for verifying that the recommendations made and the materials selected are satisfactory for the Customer's intended environment and Customer's use of the selected pump. Customer is responsible for determining the suitability of Xylem recommendations for all operating conditions within Customer's and/or End User's control. Xylem disclaims all warranties, express or implied warranties, including, but not limited to, warranties of merchantability and fitness for a particular purpose, and all express warranties other than the limited express warranty set forth in the attached standard terms and conditions of sale – Xylem Americas attached hereafter.

Xylem does not guarantee any pump intake configuration. The hydraulic and structural adequacies of these structures are the sole responsibility of the Customer or his representatives. Further, Xylem accepts no liability arising out of unsatisfactory pump intake field operating conditions. The Customer or his representatives are referred to the Hydraulic Institute Standards for recommendations on pump intake design. To optimize the hydraulic design of a field pump intake configuration, the Customer should strongly consider performing a detailed scale model pump intake study. However, the adequacies of these recommendations are the sole responsibility of the Customer.

Xylem's standard enamel paint offering is a coating applied at no extra charge and is intended to provide a limited cosmetic improvement over the bare metal product. The coating will not prevent rust, corrosion, or fading. Fading, flaking, chipping, or bleeding rust can be expected within 3 months of exposure to weather or other elements. For applications where visual aesthetics or corrosion resistance is important, please consider one of our protective coating options.

DO NOT USE FOR CONSTRUCTION UNLESS CERTIFIED	
Certified By	
Project	975@850
Tag	
PO Number	
Serial Number	13



DIMENSIONS

Dim G [Mounting Flange Dia]:	23.50 in
J [Mounting Flange Hole Dia]	0.75 in
K [Mounting Hole Places]	4
H [Mounting Flange Bolt Circle]	21.25 in
Discharge Head Size	10.00 in
BD Head [Discharge Head Base Dia]	20.00 in
HH [Head Height]	26.00 in
AD [Mounting Flange Thickness]	0.88 in
DD [Disch Flange Stickout]	12.50 in
DH [Disch Flange Height]	10.50 in
R [Hanger Flange OD]	11.75 in
COL [Column Length]	10200.00 in
Column Diameter	10.00 in
TPL [Total Pump Length]	10349.01 in
MIN SUB [Minimum Submergence]	25.64 in
LB [Length to Bottom]	0.88 in
MAX [Max Assembly OD]	11.75 in
BL [Bowl Assembly Length]	149.01 in
SU [Shaft Stickup]	14.00 in
SUT [Tube Stickup]	6.00 in
Discharge Flange	10"-150#
Suction Bowl Size	8"

PUMP DATA

Column Diameter	10 in [254 mm]
Lineshaft Diameter	1 15/16 in [49.2 mm]
Specified Flow	975.00 USgpm
Specified TDH	850.00 ft
Pumping Level	820.00 ft
Motor Manufacturer	
Driver Type	Vertical Hollow Shaft Motor
Motor Speed	1770 RPM
Phase / Frequency	

WEIGHTS

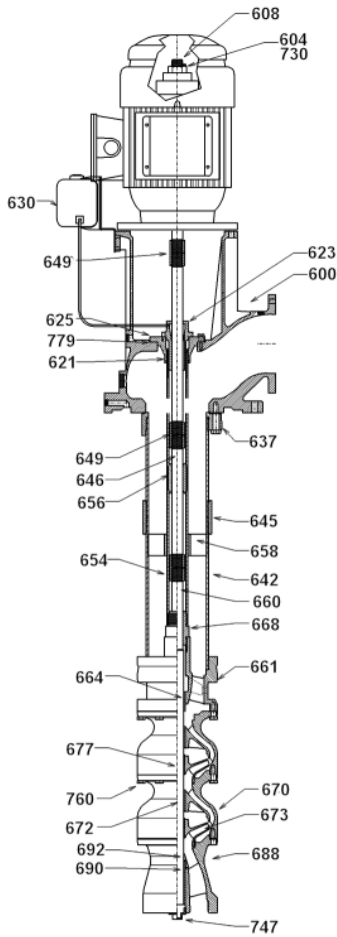
Total Bowl Weight	1627 lbs
Total Column Weight	46750 lbs
Head Weight	350 lbs
Motor Weight	**Refer to Factory**
Total Weight	**Refer to Factory**

NOTES

1	Total Pump Length ± 1.0 inch.
2	Tolerance on all dimensions is .12 or ± .12 inch per 5 ft, whichever is greater.
3	All dimensions shown are in inches unless otherwise specified.
4	Drawing not to scale.
5	½" NPT – Gauge Conn (plugged)
6	Driver may be rotated at 90° intervals about vertical centerline for details refer to driver dimension drawing.
7	Refer to product IOM for impeller setting requirements.
8	This assembly has been designed so that its natural frequency responses avoid the specific operating speeds by an adequate safety margin. The design has assumed the foundation to be rigid.

DO NOT USE FOR CONSTRUCTION UNLESS CERTIFIED

Certified By	
Project	975@850
Tag	
PO Number	
Serial Number	



BILL OF MATERIALS

ITEM	PART NAME	CODE	MATERIAL	ASTM#
Head Assembly				
608	Headshaft	2205	Carbon Steel 1045	A108
600	Head - Discharge	1018	Ductile Iron 65-45-12	A536
604	Nut - Adjusting	2242	Carbon Steel 1018	A108
616	Housing - Seal	1003	Cast Iron CL 30	A48 CLASS 30B
617	Bearing - Seal Housing	1618	Bismuth Bronze	B584 Modified
623	Nut - Tension	2242	Carbon Steel 1018	A108
625	Plate - Tension	1003	Cast Iron CL 30	A48 CLASS 30B
630	Reservoir - Oil	1425	Alum 319	B179
649	Coupling - Headshaft	2242	Carbon Steel 1018	A108
730	Key - Motor Gib	2242	Carbon Steel 1018	A108
760	Capscrew - Hex	2298	Steel Bolting GR 8	J429
Column Assembly				
642	Pipe - Column	6501	Black Pipe Sch 40	A53
645	Column - Coupling	6501	Black Pipe Sch 40	A53
646	Lineshaft	2205	Carbon Steel 1045	A108
649	Coupling - Lineshaft	2242	Carbon Steel 1018	A108
654	Tube - Enclosing	6503	Black Pipe	A53
656	Bearing - Lineshaft	1618	Bismuth Bronze	B584 Modified
658	Retainer - Tube	5121	Rubber EPDM	D3568
Bowl Assembly				
660	Bowlshaft	2227	SST 416	A582 S41600
661	Bowl - Discharge	1018	Ductile Iron 65-45-12	A536
664	Bearing - Discharge Bowl	1618	Bismuth Bronze	B584 Modified
668	Bearing - Tube Adapter	1618	Bismuth Bronze	B584 Modified
670	Bowl - Intermediate	6917	Ductile Iron Enamel	A536
672	Bearing - Intermediate Bowl	1618	Bismuth Bronze	B584 Modified
673	Impeller	1203	SST 316	A744M
677	Taperlock - Impeller	2229	SST 316	A276
688	Suction	1018	Ductile Iron 65-45-12	A536
690	Bearing - Suction	1618	Bismuth Bronze	B584 Modified
692	Sandcollar	1205	SST 304	A744M
747	Plug - Pipe	1046	Malleable Iron	A197
760	Capscrew - Hex	2229	SST 316	A276

DO NOT USE FOR CONSTRUCTION UNLESS CERTIFIED

Certified By	
Project	975@850
Tag	
PO Number	
Serial Number	



STANDARD TERMS & CONDITIONS FOR PROPOSAL

1. **Applicability.** These terms and conditions are incorporated into the proposal (collectively, the "Contract") from Layne Christensen Company ("Provider") to furnish equipment, labor, materials, products and/or services ("Work") to you ("Company"). The Contract comprises the entire agreement between the parties, and supersedes all prior or contemporaneous communications, understandings, agreements, negotiations, representations and warranties. The Contract prevails over any of Company's general terms and conditions of purchase, regardless of whether or when Company may have submitted a purchase order or contract.

2. **Payment.** Provider's agreement to perform Work hereunder is conditioned upon Company's satisfaction of Provider's credit terms, as determined in Provider's sole discretion. Payment terms are net 30 days from date of Provider's invoice or sooner as may be required by applicable law. Late payments shall accrue a finance charge of one and one-half percent (1½%) per month or the highest rate allowable by law, whichever is less. Provider shall be entitled to stop work and recover all costs and expenses, including reasonable attorneys' fees, arising out of Company's failure to make all payments due under this Contract in a timely manner.

3. **Taxes.** Company is responsible for payment of all taxes and duties not specifically assumed in writing by Provider in the Contract. Company agrees to defend, indemnify and hold Provider harmless from any damages and expenses related to any levy or attempted levy of any other taxes on Provider.

4. **Suspension; Termination.** In addition to any other remedies available to Provider, Provider may suspend or terminate this Contract with immediate effect upon written notice to Company, if Company: (i) fails to pay any amount when due under this Contract (or any other agreement Company has with Provider); (ii) has not otherwise performed or complied with any of these terms (or complied with the terms of any other agreement Company has with Provider); (iii) becomes insolvent, files a petition for bankruptcy or commences or has commenced against it proceedings relating to bankruptcy, receivership, reorganization or assignment for the benefit of creditors; or (iv) exhibits other adverse credit conditions that are unsatisfactory to Provider, as determined by Provider in its sole discretion.

5. **Shipment; Delivery.** Unless otherwise agreed in writing, all Work purchased by Company shall be FOB Provider's plant sourcing the Contract. If FOB Destination, the Company agrees to provide suitable roadways or approaches to points of delivery. Provider reserves the right to cease deliveries if Provider concludes, in its sole opinion, that the roadways or approaches are unsatisfactory. In the event Company contracts delivery beyond curb line, Company assumes liability for damages to sidewalks, driveways or other property, loss and expense incurred as a result of such deliveries to the maximum extent allowed by law. Prices quoted herein are based on prompt unloading of trucks. Delays of more than 20 minutes are subject to an additional charge. Company also agrees to provide a safe, suitable work area for Provider and its employees.

6. **Title and Risk of Loss.** Title and risk of loss passes to Company at the time any Work is loaded into Company's, or Company's agents', vehicles, barges or other modes of transport, in the case of FOB Plant sales, or in the case of Provider's delivery, upon delivery or performance of the Work.

7. **Warranty.** Provider warrants the Work will conform to any applicable plans and specifications. **PROVIDER DISCLAIMS ALL OTHER WARRANTIES, EXPRESS OR IMPLIED, INCLUDING THOSE OF MERCHANTABILITY AND FITNESS FOR PARTICULAR PURPOSES.** Company shall verify that Provider's Work complies with the plans and specifications prior to installation. Changes to the plans and specifications shall be made by written change order and Provider shall be entitled to an equitable price adjustment for such changes. The express limited warranty set forth herein shall be void if Company fails to pay Provider in full for the Work provided by Provider pursuant to this Contract or fails to provide Provider timely written notice following discovery of defective Work and a reasonable opportunity to cure.

8. **Time.** Provider shall make reasonable efforts to provide the Work by the specified delivery date and provide notice to Company of any expected delays. Provider is not responsible for any delays including, but not limited to, labor disputes, repairs to machinery, fire, flood, inclement weather, inability to obtain transportation, fuel, electric power, or operating materials or machinery at reasonable cost; or by reason of any other cause beyond its control, including the inability to produce Work meeting any applicable specification or requirement. Company shall equitably compensate Provider for additional costs incurred as a result of delays outside Provider's control. In the event any such delay, Provider reserves the right to determine the order of priority of delivering to its purchasers.

9. **Modification.** No amendment or modification of this Contract shall be valid or enforceable unless in writing and signed by the party sought to be charged, and no prior or current course of dealing between the parties, or any usage of trade or custom of the industry shall modify or supplement the terms and conditions of this Contract.

10. **No Waiver.** Provider's failure to exercise any right hereunder shall not impair or waive Provider's privilege of exercising such right to any subsequent time or times.

11. **Damages.** Provider's liability for any damages related to this Contract shall be limited to, at Provider's option, (i) replacement of defective Work or (ii) an equitable refund of prior payments by Company. **IN NO EVENT SHALL PROVIDER BE LIABLE FOR ANY CONSEQUENTIAL, INDIRECT, INCIDENTAL, SPECIAL,**

EXEMPLARY, OR PUNITIVE DAMAGES WITH REGARD TO ANY CLAIM ARISING OUT OF OR RELATED TO THIS CONTRACT. It is further understood that Provider shall not be responsible for any damage to or deterioration of any of its Work, whether completed or in process, resulting from any cause or causes beyond its reasonable control, including but not limited to design, failure of subgrade or other subsurface conditions, or failure or inadequacy of any labor or materials not furnished and installed by Provider, whether or not such failure or inadequacy was or could have been known at the time its Work was undertaken, or for any Work performed under adverse weather conditions.

12. **Indemnity.** To the maximum extent permitted by applicable law, Company shall defend, indemnify and hold Provider, its officers, employees, agents, insurers, sureties, and affiliates, harmless from any and all losses, damages, expenses (including attorneys' fees), claims, suits, liabilities, fines and remedial or clean-up costs arising out of: (i) Company's breach of this Contract or (ii) any act or omission by or on behalf of Company, its employees, contractors, and/or agents.

13. **Applicable Law.** This Contract, and the rights, duties, obligations and remedies of the parties shall be governed by or construed in accordance with the laws of the state where the Project is located.

14. **Work Conditions.** Provider shall have no responsibility for any site condition unless it was ascertainable through a visual pre-bid examination of the Project site or disclosed in writing to Provider prior to the execution of the Contract. Provider shall be entitled to rely on the design documents and specifications as being accurate and complete and shall not be responsible for errors or deficiencies in such documents. If Provider's Work is dependent upon or must be undertaken in conjunction with the work of others, such work shall be so performed and completed as to permit Provider to perform its Work in a normal uninterrupted single shift operation. Unless a time for the performance of Provider's Work is specified, Provider shall undertake the Work in the course of its normal operating schedule. Provider shall not be liable for any failure to undertake or complete the Work for causes beyond its control, and Provider may suspend the Work for causes beyond its control, including but not limited to fire, flood or other casualty; the presence on or beneath the Project site of utilities, facilities, substances, or objects, including but not limited to any substance that in Provider's opinion is hazardous or toxic or the reporting, remediation, or clean-up of which is required by any law or regulation; labor disputes or other disagreements; and accidents or other mishaps, whether affecting this Work or other operations in which Provider is involved, directly or indirectly. If, for causes beyond Provider's control, Provider's Work is not completed within twelve (12) months after the date of Company's acceptance of the Contract, Provider may cancel this Contract. In such event: (i) Provider shall be relieved of any further obligation with respect to the balance of the Work and (ii) Provider shall be entitled to receive final and complete payment for all Work performed by Provider through the date of cancellation within fifteen (15) days thereafter.

15. **Miscellaneous.** Unless otherwise specified in writing, Company shall be responsible for inspecting and testing the Work and confirming that the Work complies with the applicable specifications at Provider's facility prior to directing shipment. All funds paid to Company from a third party for Provider's Work shall be deemed in trust for the payment of Provider. Safety Data Sheets and product label information are available at Provider's office or Provider's website. Company agrees to draw to the attention of any persons handling or using the Work or having access to the Work while in Company's possession or to whom Company sells the Work or any part thereof any Safety Data Sheets or label information, or any other literature or packaging relating to the Work.

16. **MANDATORY BINDING ARBITRATION. ALL CLAIMS OR CONTROVERSIES ARISING OUT OF OR RELATED TO THIS CONTRACT SHALL BE SUBMITTED TO AND RESOLVED BY BINDING ARBITRATION BY A SINGLE ARBITRATOR IN THE COUNTY AND STATE WHERE THE PROJECT IS LOCATED; PROVIDED, HOWEVER, A PANEL OF THREE ARBITRATORS SHALL RESOLVE ALL DISPUTES WHERE THE AMOUNT IN CONTROVERSY EXCEEDS \$5 MILLION ("LARGE DISPUTES"). THE AMERICAN ARBITRATION ASSOCIATION (AAA) SHALL CONDUCT THE ARBITRATION PURSUANT TO AAA'S CONSTRUCTION INDUSTRY ARBITRATION RULES. THE COSTS OF THE ARBITRATION SHALL BE BORNE EQUALLY BY THE PARTIES. NOTWITHSTANDING ANY LANGUAGE TO THE CONTRARY IN THE CONTRACT, THE PARTIES AGREE: THAT THE UNDERLYING AWARD MAY BE APPEALED PURSUANT TO THE AAA'S OPTIONAL APPELLATE ARBITRATION RULES ("APPELLATE RULES"); THAT THE UNDERLYING AWARD RENDERED BY THE ARBITRATOR(S) SHALL, AT A MINIMUM, BE A REASONED AWARD; AND THAT THE UNDERLYING AWARD SHALL NOT BE CONSIDERED FINAL UNTIL AFTER THE TIME FOR FILING THE NOTICE OF APPEAL PURSUANT TO THE APPELLATE RULES HAS EXPIRED. EACH PARTY AFFIRMATIVELY AGREES TO THE ARBITRATION PROVISION SET FORTH HEREIN AND INTENDS THAT THIS PARAGRAPH SATISFIES THE ARBITRATION REQUIREMENTS OF ANY APPLICABLE LAW.**



Project Proposal

Joshua Basin Water District

Well 15 BESST Profiling with Layne Support
2025

Steve Taylor

LAYNE, A GRANITE COMPANY
1717 West Park Avenue, Redlands, CA, 92373
E-mail: steve.taylor@gcinc.com

Ph: 909-390-2833
Fax: 909-390-5540
www.layne.com



Layne, A Granite Company
1717 W. Park Ave.
Redlands, CA. 92373
909-390-2833

5/27/2025

Joshua Basin Water District
Ray Kolisz
61750 Cholita Rd.
Joshua Tree, CA 92252

Re: Project located at 5558 La Ferney Ave

Ray Kolisz,

Thank you for giving Layne and BESST, Inc. the opportunity to assist JBWD with this important project! We are pleased to present pricing for BESST's dye tracer profiling and test pumping of Well 15. These activities will be supported by Layne's technicians for the project duration. The following is a brief outline of the project scope; please refer to the attached BESST quotation for a detailed overview of their proposed sampling.

Scope of Work:

Layne technicians will be on site to support BESST's profiling of Well 15, managing test pumping and access to various sampling points throughout the well. The purpose of BESST's dye tracer profiling will be to determine flow characteristics, and where hexavalent chromium and other constituent concentrations are highest in well. Test pumping will be performed over two 12-hour days, and sampling will be performed by BESST, with sample delivery to lab by JBWD staff.

The attached estimate is valid for 30 days and is subject to Layne Terms and Conditions.

We realize how important this profiling is to JBWD, and we appreciate your consideration of Layne as your trusted partner for water resource solutions!

Sincerely,

Steve Taylor
Account Manager
760-681-7526

Quotation For: Joshua Basin WD Well 15 (Chrome-VI, Arsenic, Uranium)

Well Location:	Joshua Tree, California
Number of Locations:	1-Well
Quotation Date:	Monday, March 24, 2025
Prepared by:	Aaron Marriott-Project Manager/Hydrogeologist
Client Organization:	Layne
Name and Title:	Steve Taylor- Account Manager II
Street Address:	1717 W. Park Avenue
City and State:	Redlands, CA. 92373
Phone:	D: 909-390-2833 M: 760-681-7526
Email:	Steve.Taylor@gcinc.com



**GLOBAL SUBSURFACE
TECHNOLOGIES**

QUOTE VALID FOR 90 DAYS

Payment Terms: Net 30

BESST INC

50 Tiburon, Suite 7 San Rafael, CA 94901

Office: 415.453.2501 / cell: 415.302.7354

lemmens@besst-inc.com

Item	HYDROGEOLOGIC PROFILING SERVICES	Qty	Unit	Price	Total
TASK 1 - PLANNING					
Data Planning	Data Review including historical yield and chemistry reports, Planning meetings and Phone Calls, Injection and Sampling Plan.	1	project	\$ 800.00	\$ 800.00
	Subtotal #1				\$ 800.00
TASK 2 - SITE AND WELL ACCESS SURVEYS					
Mob / Demob	Mob/Demob For Access Survey	1	ea.	\$ 2,200.00	\$ 2,200.00
Per Diem	Per Diem costs for one scientist	1	days	\$ 273.00	\$ 273.00
Access Survey	Access Surveys	1	ea.	\$ 1,500.00	\$ 1,500.00
Access Survey Report	Access Survey Technical Memo	1	ea.	\$ 450.00	\$ 450.00
	Subtotal #2				\$ 4,423.00
TASK 3 - DYNAMIC FLOW PROFILING					
Mob / Demob	Dynamic Rig Mob/Demob and personnel	1	ea.	\$ 3,500.00	\$ 3,500.00
Per Diem	Per Diem costs for two scientists	2	days	\$ 546.00	\$ 1,092.00
Crew Mob/Demob	Used only if the video, flow and chemistry sampling requires more than 5 days. Crew demobs for weekend and returns to site the following Monday.	0	ea.	\$ 2,000.00	\$ -
System Setup	System Setup	1	ea.	\$ 1,150.00	\$ 1,150.00
Dynamic Flow	Dynamic Flow Survey (up to 20 injection depths). Optional injection points may be recommended based on the initial flow data and the length of the well screen.	1	ea.	\$ 8,100.00	\$ 8,100.00
	Subtotal #3				\$ 13,842.00
TASK 4 - DYNAMIC DEPTH DEPENDENT SAMPLING					
Groundwater Sampling	Dynamic Groundwater Sampling Survey (up to 10 1-liter samples, 8 depth dependent with HydroBooster Pump and 2 wellhead). Optional groundwater sampling depths may be recommended based on the initial flow data and the length of the well screen. Does not include laboratory costs.	1	ea.	\$ 8,200.00	\$ 8,200.00
	Subtotal #4				\$ 8,200.00
TASK 5 - HYDROGEOLOGIC REPORT					
Engineering Report	ENGINEERING REPORT: Detailed Dynamic Flow and Mass Balance Report (Mass Balance Up To 8 Constituents): Includes Analysis, Conclusions and Recommendations for Well Modification to Remove Contaminants of Concern.	1	ea.	\$ 8,850.00	\$ 8,850.00
	Subtotal #5				\$ 8,850.00
TASK 6 - OPTIONAL SERVICES					
Extra Injections	Extra Injection Depths	0	ea.	\$ 125.00	\$ -
Extra Samples	Extra Groundwater Sample Depths	0	ea.	\$ 235.00	\$ -
Extra Volume	Extra Groundwater Sample Liters at Each Point	0	ea.	\$ 65.00	\$ -
Extra Analytes	Extra Mass Balance Fee Per Analyte	0	ea.	\$ 450.00	\$ -
Pump Crew Oversight	Oversee test pump installation-Lift and Shift operations-Access Pipe installation or other well preparation activities.	0	hr.	\$ 165.00	\$ -
Standby	Standby Rate	0	hr.	\$ 275.00	\$ -
Oil Lube Fee	Oil Lube Fee (Decon or Dispose of Tubing)	0	ft	\$ 2.75	\$ -
Toilet Rental	Rent and have portable toilet delivered to site	1	well	\$ 400.00	\$ 400.00
Generator Rental	Required if AC power not available on site	0	day	\$ 125.00	\$ -
Multi Water Parameter Meter	pH, Temp, conductivity, dissolved oxygen, redox potential and turbidity	1	ea.	\$ 750.00	\$ 750.00
Water Level Meter	Measure Water Levels	1	ea.	\$ 95.00	\$ 95.00
Labels	Complete Sample Bottle Labels	1	ea.	\$ 285.00	\$ 285.00
COC	Complete Chain of Custody	1	ea.	\$ 115.00	\$ 115.00
Package	Package Samples	1	ea.	\$ 115.00	\$ 115.00
	Subtotal #6				\$ 1,760.00
TOTAL: Including Options					\$ 37,875.00

Client Name _____
Client Signature _____

Client PO Number _____
Date _____



STANDARD TERMS & CONDITIONS FOR PROPOSAL

1. **Applicability.** These terms and conditions are incorporated into the proposal (collectively, the "Contract") from Layne Christensen Company ("Provider") to furnish equipment, labor, materials, products and/or services ("Work") to you ("Company"). The Contract comprises the entire agreement between the parties, and supersedes all prior or contemporaneous communications, understandings, agreements, negotiations, representations and warranties. The Contract prevails over any of Company's general terms and conditions of purchase, regardless of whether or when Company may have submitted a purchase order or contract.

2. **Payment.** Provider's agreement to perform Work hereunder is conditioned upon Company's satisfaction of Provider's credit terms, as determined in Provider's sole discretion. Payment terms are net 30 days from date of Provider's invoice or sooner as may be required by applicable law. Late payments shall accrue a finance charge of one and one-half percent (1½%) per month or the highest rate allowable by law, whichever is less. Provider shall be entitled to stop work and recover all costs and expenses, including reasonable attorneys' fees, arising out of Company's failure to make all payments due under this Contract in a timely manner.

3. **Taxes.** Company is responsible for payment of all taxes and duties not specifically assumed in writing by Provider in the Contract. Company agrees to defend, indemnify and hold Provider harmless from any damages and expenses related to any levy or attempted levy of any other taxes on Provider.

4. **Suspension; Termination.** In addition to any other remedies available to Provider, Provider may suspend or terminate this Contract with immediate effect upon written notice to Company, if Company: (i) fails to pay any amount when due under this Contract (or any other agreement Company has with Provider); (ii) has not otherwise performed or complied with any of these terms (or complied with the terms of any other agreement Company has with Provider); (iii) becomes insolvent, files a petition for bankruptcy or commences or has commenced against it proceedings relating to bankruptcy, receivership, reorganization or assignment for the benefit of creditors; or (iv) exhibits other adverse credit conditions that are unsatisfactory to Provider, as determined by Provider in its sole discretion.

5. **Shipment; Delivery.** Unless otherwise agreed in writing, all Work purchased by Company shall be FOB Provider's plant sourcing the Contract. If FOB Destination, the Company agrees to provide suitable roadways or approaches to points of delivery. Provider reserves the right to cease deliveries if Provider concludes, in its sole opinion, that the roadways or approaches are unsatisfactory. In the event Company contracts delivery beyond curb line, Company assumes liability for damages to sidewalks, driveways or other property, loss and expense incurred as a result of such deliveries to the maximum extent allowed by law. Prices quoted herein are based on prompt unloading of trucks. Delays of more than 20 minutes are subject to an additional charge. Company also agrees to provide a safe, suitable work area for Provider and its employees.

6. **Title and Risk of Loss.** Title and risk of loss passes to Company at the time any Work is loaded into Company's, or Company's agents', vehicles, barges or other modes of transport, in the case of FOB Plant sales, or in the case of Provider's delivery, upon delivery or performance of the Work.

7. **Warranty.** Provider warrants the Work will conform to any applicable plans and specifications. **PROVIDER DISCLAIMS ALL OTHER WARRANTIES, EXPRESS OR IMPLIED, INCLUDING THOSE OF MERCHANTABILITY AND FITNESS FOR PARTICULAR PURPOSES.** Company shall verify that Provider's Work complies with the plans and specifications prior to installation. Changes to the plans and specifications shall be made by written change order and Provider shall be entitled to an equitable price adjustment for such changes. The express limited warranty set forth herein shall be void if Company fails to pay Provider in full for the Work provided by Provider pursuant to this Contract or fails to provide Provider timely written notice following discovery of defective Work and a reasonable opportunity to cure.

8. **Time.** Provider shall make reasonable efforts to provide the Work by the specified delivery date and provide notice to Company of any expected delays. Provider is not responsible for any delays including, but not limited to, labor disputes, repairs to machinery, fire, flood, inclement weather, inability to obtain transportation, fuel, electric power, or operating materials or machinery at reasonable cost; or by reason of any other cause beyond its control, including the inability to produce Work meeting any applicable specification or requirement. Company shall equitably compensate Provider for additional costs incurred as a result of delays outside Provider's control. In the event any such delay, Provider reserves the right to determine the order of priority of delivering to its purchasers.

9. **Modification.** No amendment or modification of this Contract shall be valid or enforceable unless in writing and signed by the party sought to be charged, and no prior or current course of dealing between the parties, or any usage of trade or custom of the industry shall modify or supplement the terms and conditions of this Contract.

10. **No Waiver.** Provider's failure to exercise any right hereunder shall not impair or waive Provider's privilege of exercising such right to any subsequent time or times.

11. **Damages.** Provider's liability for any damages related to this Contract shall be limited to, at Provider's option, (i) replacement of defective Work or (ii) an equitable refund of prior payments by Company. **IN NO EVENT SHALL PROVIDER BE LIABLE FOR ANY CONSEQUENTIAL, INDIRECT, INCIDENTAL, SPECIAL,**

EXEMPLARY, OR PUNITIVE DAMAGES WITH REGARD TO ANY CLAIM ARISING OUT OF OR RELATING TO THIS CONTRACT. It is further understood that Provider shall not be responsible for any damage to or deterioration of any of its Work, whether completed or in process, resulting from any cause or causes beyond its reasonable control, including but not limited to design, failure of subgrade or other subsurface conditions, or failure or inadequacy of any labor or materials not furnished and installed by Provider, whether or not such failure or inadequacy was or could have been known at the time its Work was undertaken, or for any Work performed under adverse weather conditions.

12. **Indemnity.** To the maximum extent permitted by applicable law, Company shall defend, indemnify and hold Provider, its officers, employees, agents, insurers, sureties, and affiliates, harmless from any and all losses, damages, expenses (including attorneys' fees), claims, suits, liabilities, fines and remedial or clean-up costs arising out of: (i) Company's breach of this Contract or (ii) any act or omission by or on behalf of Company, its employees, contractors, and/or agents.

13. **Applicable Law.** This Contract, and the rights, duties, obligations and remedies of the parties shall be governed by or construed in accordance with the laws of the state where the Project is located.

14. **Work Conditions.** Provider shall have no responsibility for any site condition unless it was ascertainable through a visual pre-bid examination of the Project site or disclosed in writing to Provider prior to the execution of the Contract. Provider shall be entitled to rely on the design documents and specifications as being accurate and complete and shall not be responsible for errors or deficiencies in such documents. If Provider's Work is dependent upon or must be undertaken in conjunction with the work of others, such work shall be so performed and completed as to permit Provider to perform its Work in a normal uninterrupted single shift operation. Unless a time for the performance of Provider's Work is specified, Provider shall undertake the Work in the course of its normal operating schedule. Provider shall not be liable for any failure to undertake or complete the Work for causes beyond its control, and Provider may suspend the Work for causes beyond its control, including but not limited to fire, flood or other casualty; the presence on or beneath the Project site of utilities, facilities, substances, or objects, including but not limited to any substance that in Provider's opinion is hazardous or toxic or the reporting, remediation, or clean-up of which is required by any law or regulation; labor disputes or other disagreements; and accidents or other mishaps, whether affecting this Work or other operations in which Provider is involved, directly or indirectly. If, for causes beyond Provider's control, Provider's Work is not completed within twelve (12) months after the date of Company's acceptance of the Contract, Provider may cancel this Contract. In such event: (i) Provider shall be relieved of any further obligation with respect to the balance of the Work and (ii) Provider shall be entitled to receive final and complete payment for all Work performed by Provider through the date of cancellation within fifteen (15) days thereafter.

15. **Miscellaneous.** Unless otherwise specified in writing, Company shall be responsible for inspecting and testing the Work and confirming that the Work complies with the applicable specifications at Provider's facility prior to directing shipment. All funds paid to Company from a third party for Provider's Work shall be deemed in trust for the payment of Provider. Safety Data Sheets and product label information are available at Provider's office or Provider's website. Company agrees to draw to the attention of any persons handling or using the Work or having access to the Work while in Company's possession or to whom Company sells the Work or any part thereof any Safety Data Sheets or label information, or any other literature or packaging relating to the Work.

16. **MANDATORY BINDING ARBITRATION. ALL CLAIMS OR CONTROVERSIES ARISING OUT OF OR RELATED TO THIS CONTRACT SHALL BE SUBMITTED TO AND RESOLVED BY BINDING ARBITRATION BY A SINGLE ARBITRATOR IN THE COUNTY AND STATE WHERE THE PROJECT IS LOCATED; PROVIDED, HOWEVER, A PANEL OF THREE ARBITRATORS SHALL RESOLVE ALL DISPUTES WHERE THE AMOUNT IN CONTROVERSY EXCEEDS \$5 MILLION ("LARGE DISPUTES"). THE AMERICAN ARBITRATION ASSOCIATION (AAA) SHALL CONDUCT THE ARBITRATION PURSUANT TO AAA'S CONSTRUCTION INDUSTRY ARBITRATION RULES. THE COSTS OF THE ARBITRATION SHALL BE BORNE EQUALLY BY THE PARTIES. NOTWITHSTANDING ANY LANGUAGE TO THE CONTRARY IN THE CONTRACT, THE PARTIES AGREE: THAT THE UNDERLYING AWARD MAY BE APPEALED PURSUANT TO THE AAA'S OPTIONAL APPELLATE ARBITRATION RULES ("APPELLATE RULES"); THAT THE UNDERLYING AWARD RENDERED BY THE ARBITRATOR(S) SHALL, AT A MINIMUM, BE A REASONED AWARD; AND THAT THE UNDERLYING AWARD SHALL NOT BE CONSIDERED FINAL UNTIL AFTER THE TIME FOR FILING THE NOTICE OF APPEAL PURSUANT TO THE APPELLATE RULES HAS EXPIRED. EACH PARTY AFFIRMATIVELY AGREES TO THE ARBITRATION PROVISION SET FORTH HEREIN AND INTENDS THAT THIS PARAGRAPH SATISFIES THE ARBITRATION REQUIREMENTS OF ANY APPLICABLE LAW.**