

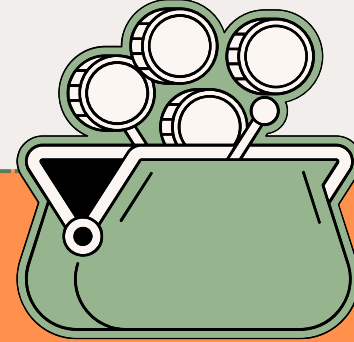
FINANCE FACTS & STATS

QUARTER ENDED 09/30/2025



CASH

CASH BALANCES INCREASED BY \$1.1 MIL FROM 06/30/25. SPENDING IS STILL DOWN SIGNIFICANTLY DUE TO THE PAUSED PIPELINE PROGRAM WHILE NON-OPERATING REVENUES CONTINUE TO EXCEED EXPECTATIONS FOR NOW. COMPARISON WITH THE PRIOR YEAR ROLLING 12 MONTHS SAW A \$5.498 MIL INCREASE.



NEW METER CONNECTIONS

NEW METER CONNECTIONS INCREASED SLIGHTLY FROM LAST YEAR. AT 09/30/24, 4 NEW METER CONNECTIONS WERE PAID VS. 6 THIS YEAR. THE PERCENTAGE OF METERS IN THE WASTEWATER AREA IS DOWN THIS YEAR, 33% VS. 75% LAST YEAR.



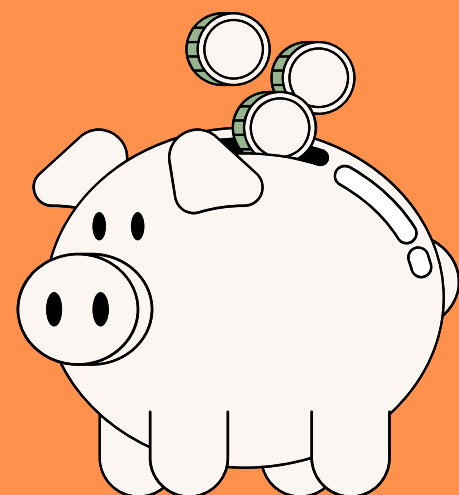
ACCOUNTS RECEIVABLE (A/R)

TOTAL A/R INCREASED LESS THAN \$20K OR 1% COMPARED TO LAST YEAR. THE TOTAL BALANCE AND THE 120+ DAY AGING BRACKET CONTINUE TO REFLECT THE UNSUAL 23/24 BAD DEBT WRITE-OFF OF \$104K. NO REMARKABLE CHANGES.



INVESTMENT INTEREST

LAIF INTEREST RECEIVED IN QE 09/30/25 (INTEREST POSTED 10/15/25) WAS \$215,401 (4.34%). CAMP INTEREST RECEIVED IN QE 09/30/25 WAS \$40,438 (AN AVERAGE RATE OF 4.36%).



BUDGET VS. ACTUAL

AT 25% OF THE YEAR, TOTAL REVENUES STAND AT 23% OF BUDGET (PROPERTY TAXES & ASSESSMENT REVENUES AREN'T RECORDED UNTIL SECOND QUARTER.). ACTUAL COSTS STAND AT 18% OF BUDGET. A FEW BUDGET ADJUSTMENTS WERE MADE TO ROLL UNUSED BUDGETS FROM 2024/25 TO 2025/26. A FEW MORE ADJUSTMENTS ARE PENDING FOR THE NEXT QUARTER.